

Click on Create a Project



GCB
Duke Center for Genomic
and Computational Biology

Express Data Repository

Express Repository

[Manage Stashes](#)

[Manage Files](#)

Manage Projects

[Create a Project](#)

[Project Summaries](#)

[Project Search](#)

[Logout](#)

GCB Sign-On

[Return to GCB Sign-On](#)

[Edit GCB Account
Information](#)

Manage Your Projects

(w = WORLD, d = DUKE)

8022 : OW songbird	Add Resource
8021 : Valentina	Add Resource
8020 : delerium (d)	Add Resource
8019 : Test-zip	Add Resource
8018 : RNAQC	Add Resource
8017 : Tumor Heterogeneity	Add Resource
8016 : Malaria	Add Resource
8015 : Malaia	Add Resource
8014 : Darrin Mann	Add Resource
8012 : Datto_breastbiopsies	Add Resource
8009 : Garst LC trial	Add Resource
8001 : catalona samples	Add Resource
8000 : Geo (w)	Add Resource
4207 : 908Devices	Add Resource
4206 : PRE Letrozole DCIS	Add Resource
4205 : Pre Letrozole DCIS	Add Resource
4204 : Oyster Cement Insoluble Fraction	Add Resource
4203 : DNL	Add Resource
4202 : Comparative Genomics Osteosarcoma	Add Resource
4201 : microarrayDataTutorial	Add Resource
4200 : FGF13 KO mouse microarray	Add Resource
4199 : Low_input_ChIP_gdTcell	Add Resource
4198 : CMV gB Domain II	Add Resource
4197 : tdap	Add Resource

Express Repository

Manage Stashes

Manage Files

Manage Projects

Create a Project

Project Summaries

Project Search

Logout

GCB Sign-On

Return to GCB Sign-On

Edit GCB Account
Information

Create A New Project

Fields that are **highlighted** are required.

Project name

Choose the Owner of the Project

-select-

-select-

- 0001kloos
- 000aarreola
- 001jculaval
- 001subhash
- 00peter00
- 01apeterson
- 01haucklab
- 07engelender
- 08623mori
- 08neishlab
- 09mgambello
- 09seanflyn
- 09testtest
- 0britenccu
- 1003551092
- 100krishna
- 1012hzxia
- 1027lmeng
- 105kimtran

Enter a short name for your project

Make yourself the owner.

If you are not the PI, please Grant Access to this Project to your PI, and any other scientists in your lab or project group who will need access to this project's data.



Lisa StJohnWilliams
(las85) is currently
logged in. Not this
person?
[Log out.](#)

Options

[Home](#)

Admin Options

[Your Assigned Orders](#)

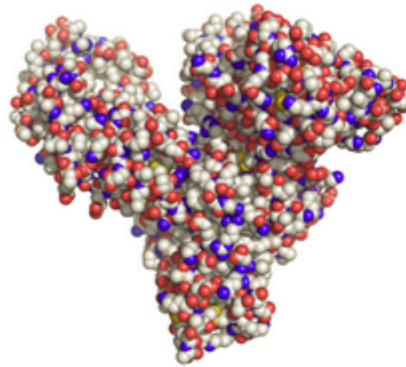
[Manage Sample Orders](#)

[List Samples](#)

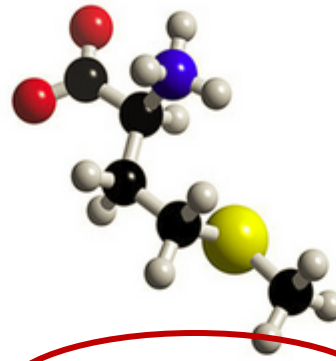
[User Administration](#)

[Choices](#)

Choose an order type to begin your sample submission



[Proteomics order](#)



[Metabolomics order](#)

Choose metabolomics order

Recent Orders

« Previous 1 2 Next »

Order type	Charge code	Projects	Number of Samples	Order status	Comments	Actions
Metabolomics Order	0000000	4026:Oxylipin CSF Test	19	Non-Billable	Test different extraction methods for oxylipins in Cerebrospinal Fluid las85 6 months ago (03/10/2015) Four methods were evaluated to extract 1mL CSF. None were satisfactory. 1) Lyphilzation: 1mL CSF was lyophilized, reconstituted in 800uL ACN+200uL water, then extracted using the PLD+ plate. 2) 200uL aliquots were extracted using PLD+ plate then combined and dried. 3) 1mL CSF was added to a single well of a PLD+ plate in 200uL aliquots and extracted. 4)	Show

Lisa StJohnWilliams (las85) is currently logged in. Not this person?
[Log out.](#)

Options

[Home](#)

Admin Options

[Your Assigned Orders](#)

[Manage Sample Orders](#)

[List Samples](#)

[User Administration](#)

[Choices](#)

New Metabolomics Order

Required fields are **bolded**.

Customer Type

Charge code

Experimental Goal

Select Duke Customer

Enter the appropriate code

Brief explanation of your goal

Lisa StJohnWilliams
(las85) is currently
logged in. Not this
person?
[Log out.](#)

[Options](#)

[Home](#)

[Admin Options](#)

[Your Assigned Orders](#)

[Manage Sample Orders](#)

[List Samples](#)

[User Administration](#)

[Choices](#)

New Metabolite Sample

Required fields are **bolded**.

For charge code: 0000

— Protein Information

Sample name

Project 1:Duke Breast cancer samples ▼

Species/Taxonomy - Select One - ▼

Sample Subtype None (N/A) ▼

Sample Derivatization / Chemical Modification

Treatment (e.g. drug, chemical stimuli)

Sample contains infectious
material?

Sample contains hazardous
chemical material?

Hazardous Material

Molecule(s) of Particular
Interest?

Storage Conditions Room Temperature ▼

Panel - Select One - ▼

Sample amount by - Select One - ▼

— Additional Information

Comments

[Create](#)

Describe your first sample
Some fields are required
Once you create a sample
You will be able to Duplicate or
Replicate it with different names